



MOTORIZED LOCK FOR
EXTERNAL ACCESSSES

MADE
IN
ITALY

MOTTURA **X** TECHNOLOGY

**EXPAND
SECURITY
AROUND YOU**



safeguarding your security



**XDRIN IS A BRAND NEW, FLEXIBLE AND SECURE
MOTORIZED LOCK.**

FLEXIBLE

USES THE SAME FIXING PLATES
OF THE MOST POPULAR ELECTRIC
LOCKS (50/60/70 BACKSET)

SAFE

THE INOX BOLT CLOSES
AUTOMATICALLY, SILENTLY AND AT
THE HIGHEST LEVEL OF SAFETY,
AS SOON AS THE DOOR LEANS TO
THE FRAME.
AN INTERNAL LED shows the door
status.

RELIABLE

TESTED ACCORDING TO THE NORM
IEC/IP44
Dust and water resistant



LONG-LASTING

The zinc-plated and black finishes
and the electronic mainboard
are waterproof, therefore the lock
suits external environments.

The internal gear are made of
self-lubricating nickel silver and
ensure smooth operation and
working.

POWER SOURCE 12 /24V ac/dc

MOTTURA PATENT



XDRIN is recommended for **external and peripheral accesses:**

- **PEDESTRIAN ENTRIES**
- **GATE DOORS**
- **BUILDING ENTRANCES**

Many options available:

- KEY/KEY or KEY/THUMBTURN **VERSIONS**
- **FINISH:** ZINC-PLATED, BLACK (for external applications),
CHROME (for internal applications)
- **VARIABLE BACKSET:** 50/60/70 MM
- LEFT AND RIGHT **HANDED**

XDRIN joins the most updated **electronic technologies** to Mottura's
traditional reliability

XDRIN is part of **MotturaXTechnology**, the security
friendly technology.



MOTTURA **X** TECHNOLOGY

XDRIN can be connected to MOTTURA XTECHNOLOGY devices (peripherals), to open and close EVEN WITHOUT KEYS:



M X TRACK

FINGERPRINT +
TRANSPONDER READER



M X DIGIT

TOUCHSCREEN KEYBOARD
+ TRANSPONDER READER



M X PIN

MEMBRANE
KEYBOARD



M X BLUE

BLUETOOTH DEVICE + APP



XTRACK and XDIGIT can be connected to XDRIN through RELAY MODULE art. 99.724 or 99.746
XPIN and XBLUE can be connected through DRY CONTACT.

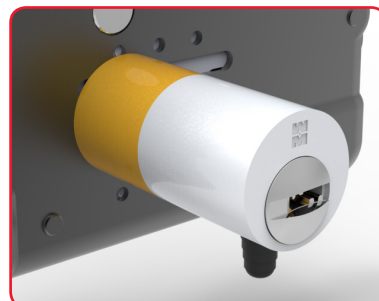
BLACK



MATT BLACK finish

KNOB/CYLINDER VERSION (RIGHT OPENING SIDE), 50mm backset
example

- with **PROJECT CYLINDER**, art. 49XD2ND5**P0**
- with **CHAMPIONS C28PLUS**, art. 49XD2ND5**B0**



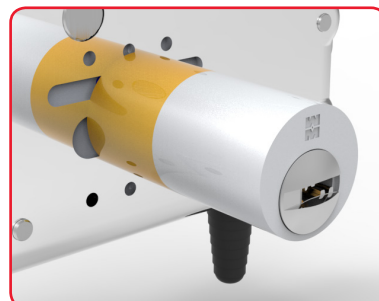
CHROME



POLISH CHROME finish

KNOB/CYLINDER VERSION (RIGHT OPENING SIDE), 60mm backset
example

- with **PROJECT CYLINDER**, art. 49XD2CD6**P0**
- with **CHAMPIONS C28PLUS**, art. 49XD2CD6**B0**



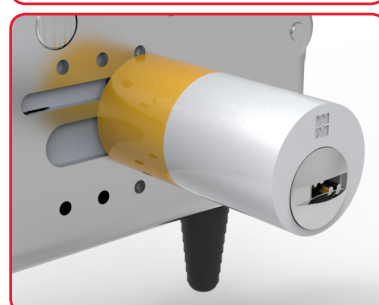
ZINC-PLATED



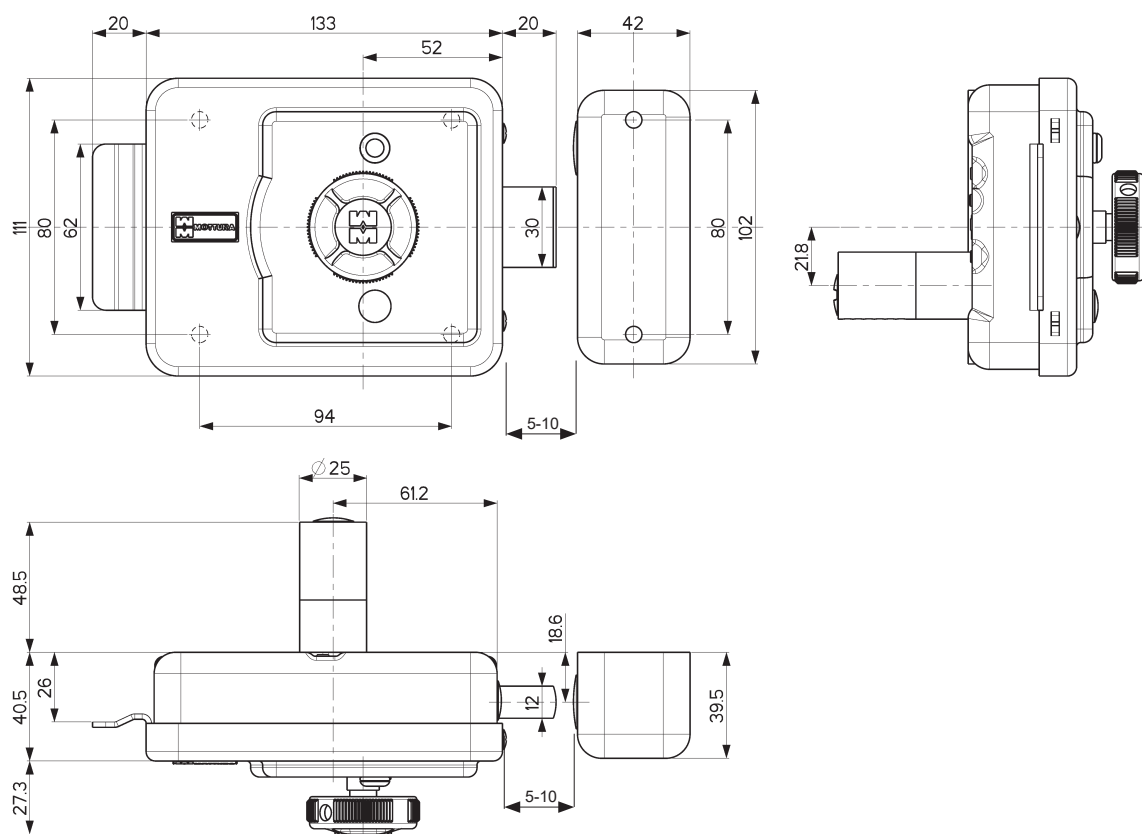
ZINC-PLATED finish

CYLINDER/CYLINDER VERSION (RIGHT OPENING SIDE), 70mm backset
example

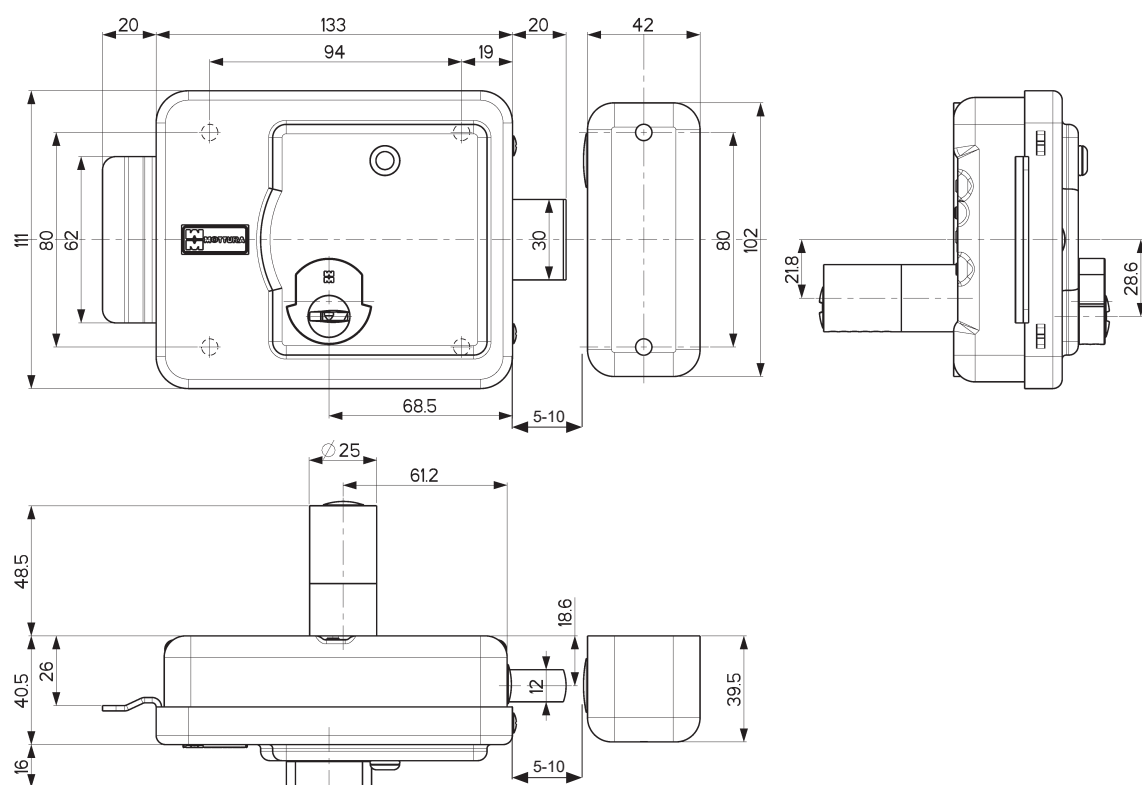
- with **PROJECT CYLINDER**, art. 49XD1ZD7**P0**
- with **CHAMPIONS C28PLUS**, art. 49XD1ZD7**B0**



WITH INTERNAL KNOB



WITH INTERNAL CYLINDER



OTHER CHARACTERISTICS

XDRIN USES THE SAME FIXING PLATES OF THE MOST POPULAR ELECTRIC LOCKS, WITH 50/60/70 BACKSET: THE SAME PRODUCT FOR ANY BACKSET

The black and zinc-plated finish and the waterproof electronic mainboard make it SUITABLE TO EXTERNAL APPLICATIONS.

TESTED ACCORDING TO THE NORM IEC/IP44: it is dust and water resistant.



THE INOX BOLT, ACTIVATED BY MOTOR, SAFELY CLOSES THE DOOR WHEN IT APPROACHES TO THE FRAME, IN A NEAT AND SILENT MOVEMENT.

The internal gears are made of self-lubricating nickel silver and ensure smooth operation and working.

AUTOMATIC BOLT CLOSING, if the gate or door are kept closed after some seconds (it is possible to set an automatic closing between 5 and 60 seconds).

An internal LED shows the door status: green if it is open, flashing if it is opening, red if it is closed.

Key/knob or key/key versions available.

RED internal KNOB to visibly spot security exit, in case of black-out.
8mm knob square, to fit the most popular standard.

Opening sides: left and right

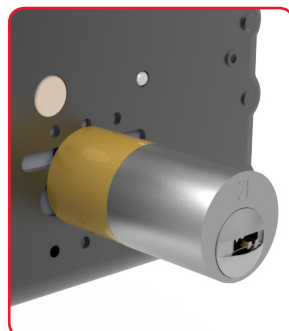
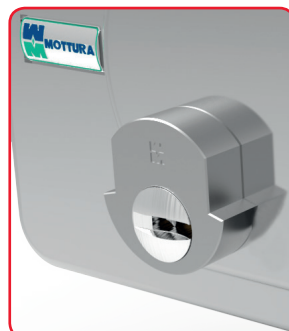
Finish:

- Galvanized steel (ideal for external environments)
- Matt black (ideal for external environments)
- Polish chrome (ideal for internal environments)

CHAMPIONS C28PLUS (art.CP8SC4710 - CP8SC47ES1) or Project (art.DPCSX47101 - DPCSX47ES1) cylinders can be installed. To install any other cylinder model, please contact the firm.

POWER SOURCE 12/24V ac/dc
(please see the table aside)

External escutcheon are available - 95148/25 or 95248/25 types.
For other types please refer to the general Mottura Catalogue or visit www.mottura.it



project
CILINDRI-CYLINDERS

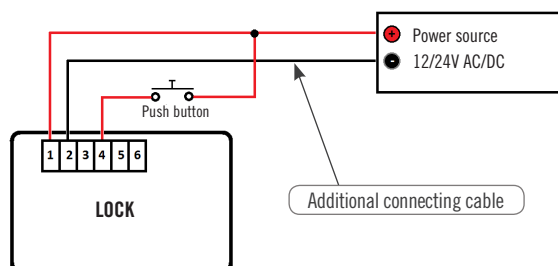


DPCSX47101

CHAMPIONS C28PLUS



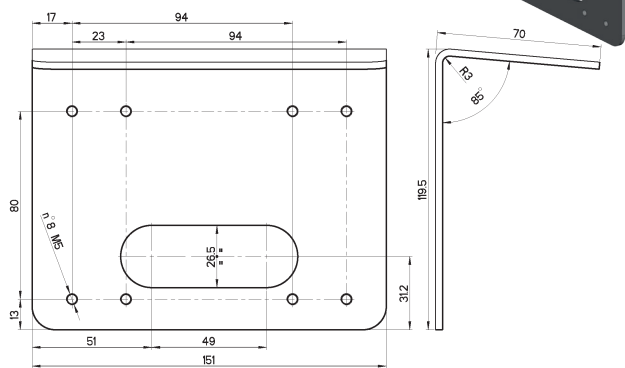
CP8SC4710



OPTIONALS

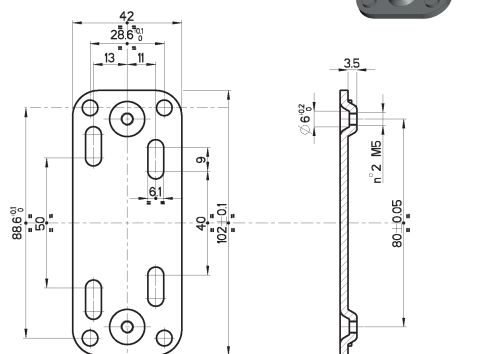
94415

Zinc-plated PLATE with
"shelf" to fix the lock



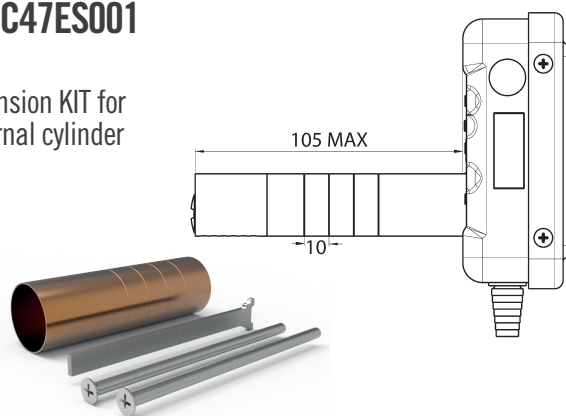
94416

Galvanized fixing PLATE
for strike



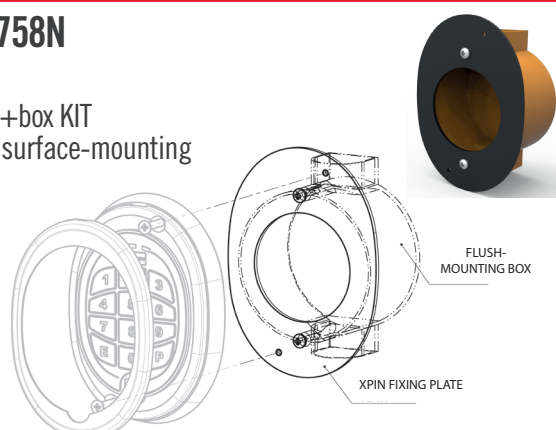
98C47ES001

Extension KIT for
external cylinder



99758N

Plate+box KIT
XPIN surface-mounting



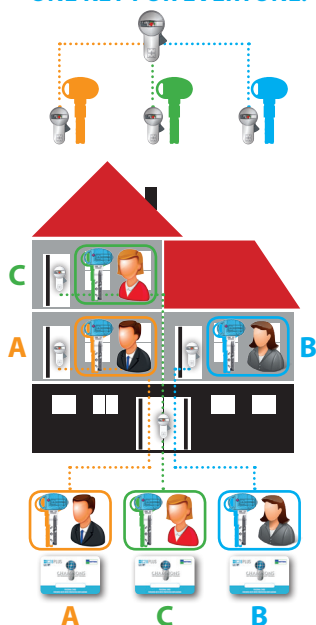
MASTER KEY



CC SYSTEM (central lock)

Every key can open its own cylinder and the central lock, but not the other cylinders of the system.

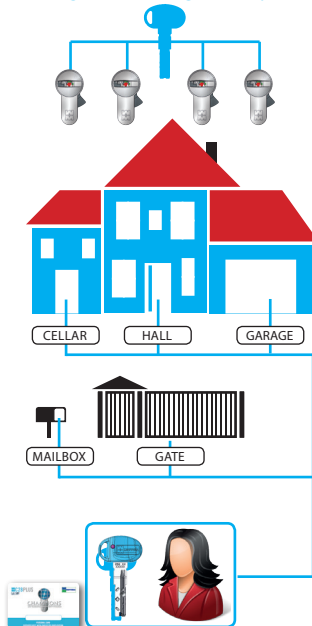
ONE KEY FOR EVERYONE!



KA SYSTEM (KEYED ALIKE)

Just one key to open all the cylinders. Such system includes keyed alike cylinders that can be therefore opened with the same key.

ONE KEY FOR ALL!



XDRIN featured with Master Key

XDRIN can be equipped with Project and C28PLUS cylinders. It can be integrated to master key systems, where the same key can open many gates.

The example aside shows two C28plus mastered systems:

- **KA system, suitable for an independent house**
- **CC system, suitable for buildings**



MOTTURA **X** TECHNOLOGY

Mottura **X** technology is the new range of electronic and motorized locks, peripherals and control systems, technologically performing and updated to the most recent generation of innovations. The security-friendly technology which joins the highest security and the ease of use.

THE **SMARTER**
THE **SAFER**

Discover all our electronic solutions for your security on www.mottura.it



safeguarding your security

Mottura Serrature di Sicurezza S.p.A.
Strada Antica di Francia, 34
10057 Sant'Ambrogio (TO)
www.mottura.it



810 5 6 5 3 0 1 4 7 1 8 9 8
P190526ENG a_018956 - 05/18